

New Product

360° Micro-polyview Imaging Device

Special description

This device should be compatible with object-side telecentric lens. It comes with an illumination system, user can select suitable lens according to different objects.

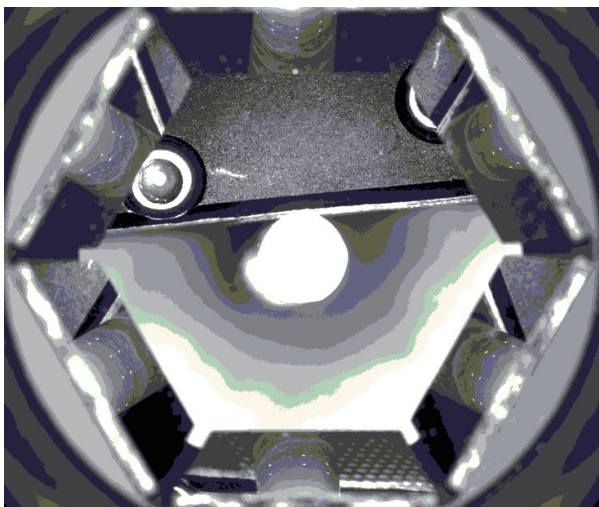
Key advantages

All the views of a stereo part can be imaged simultaneously, it will greatly improve efficiency and reduce equipment costs.

Apply to

- 1-10mm small parts lateral inspection.
- All the views have the same magnification.
- All the views of a stereo part can be imaged simultaneously, it will greatly improve efficiency and reduce equipment costs.
- Perfectly compatible with all the industrial cameras in the current market.

Real Test Picture



Model		SODM12V1	SODMV1
Support sensor		1/2"	2/3"
Maximum inspection height (mm)	Screw thread M1.0	1.5	1.5
	Screw thread M1.2	1.75	1.75
	Screw thread M1.7	1.8	1.8
	Screw thread M2.0	2.4	2.4
	Screw thread M2.5	2.7	2.7
	Screw thread MΦ3	4	4
	Screw thread MΦ4	4.9	4.9
	Screw thread MΦ5	5	5
	Screw thread MΦ6	6	6
	Screw thread MΦ8	5	5
	Screw thread MΦ10	4.5	4.5
Optical Specifications	Wavelength range (nm)	400~680	400~680
	WD(mm)	1.5..5	1.5..5
	MTF30	>200lp/mm	>135lp/mm
	F/#	4.2	6.5
Mechanical Specifications	Diameter(mm)	123	123
	Length(mm)	256	256
	Mount	C	C
Electrical Specifications	Illumination voltage (V.DC)	24	24
	Illumination power (W)	18	18