

# S11VTC03507X

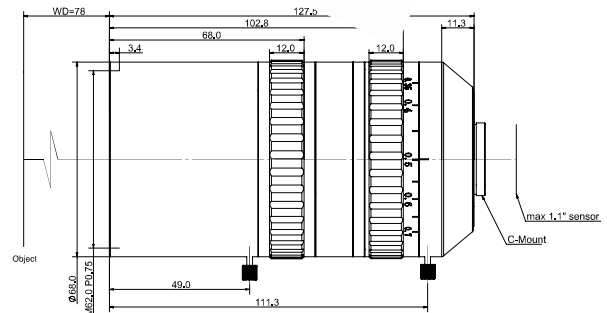


## Zoom Telecentric Lens

The S11VTC series are all zoom telecentric lenses, which can change the magnification without changing the working distance, while ensuring telecentricity, compact structure and flexible use. It has excellent imaging quality, low distortion image, and is widely used in precision visual inspection.

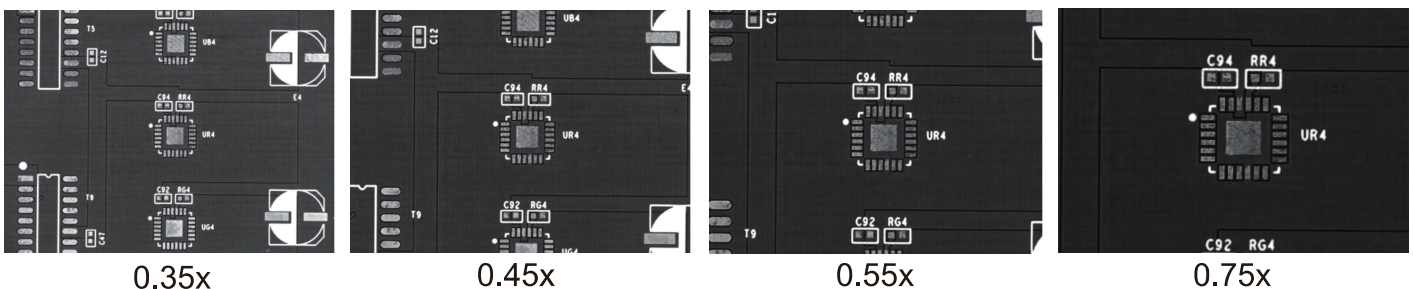


1. Full field of view, full magnification range can achieve resolution better than 100lp/mm.
2. Maximum support 1.1 inch 3.45 $\mu$ m area scan camera.
3. The magnification change can be realized without changing WD, which can facilitate the detection accuracy of the system.
4. Support adjustable aperture, can adjust the depth of field according to demand.



Optical Specification						
Magnification $\beta(x)$	0.35	0.42	0.49	0.56	0.63	0.7
WD (mm)	78 $\pm$ 2	78 $\pm$ 2	78 $\pm$ 2	78 $\pm$ 2	78 $\pm$ 2	78 $\pm$ 2
Object side FOV ( $\Phi$ mm)	52	43.3	37.1	32.5	28.9	26
Support CCD ( $\Phi$ mm)	18.2(1.1")	18.2(1.1")	18.2(1.1")	18.2(1.1")	18.2(1.1")	18.2(1.1")
Best F/#	5	5.3	5.8	6.1	6.5	6.8
Object side N.A	0.035	0.039	0.042	0.046	0.048	0.051
Resolution ( $\mu$ m)	9.5	8.5	7.9	7.3	17.8	6.5
Telecentricity ( $^{\circ}$ max)	1.35	0.81	0.52	0.33	0.23	0.17
Theory DoF(mm)	3.3	2.4	1.9	1.6	1.3	1.1
Distortion(% max)	0.1	0.2	0.2	0.1	0.1	0.2
MTF30 (lp/mm)	146	164	154	140	126	110

## Test Images



\* World Top Level Of Telecentric Lenses Factory  
 \* Fast Leadertime 3 working days  
 \* 3000+ Models Lenses  
 \* To Be No.1 On TC

[www.soyocctv.com](http://www.soyocctv.com) | [www.soyocctv.cn](http://www.soyocctv.cn)

Your Better Partner At Telecentric Lenses